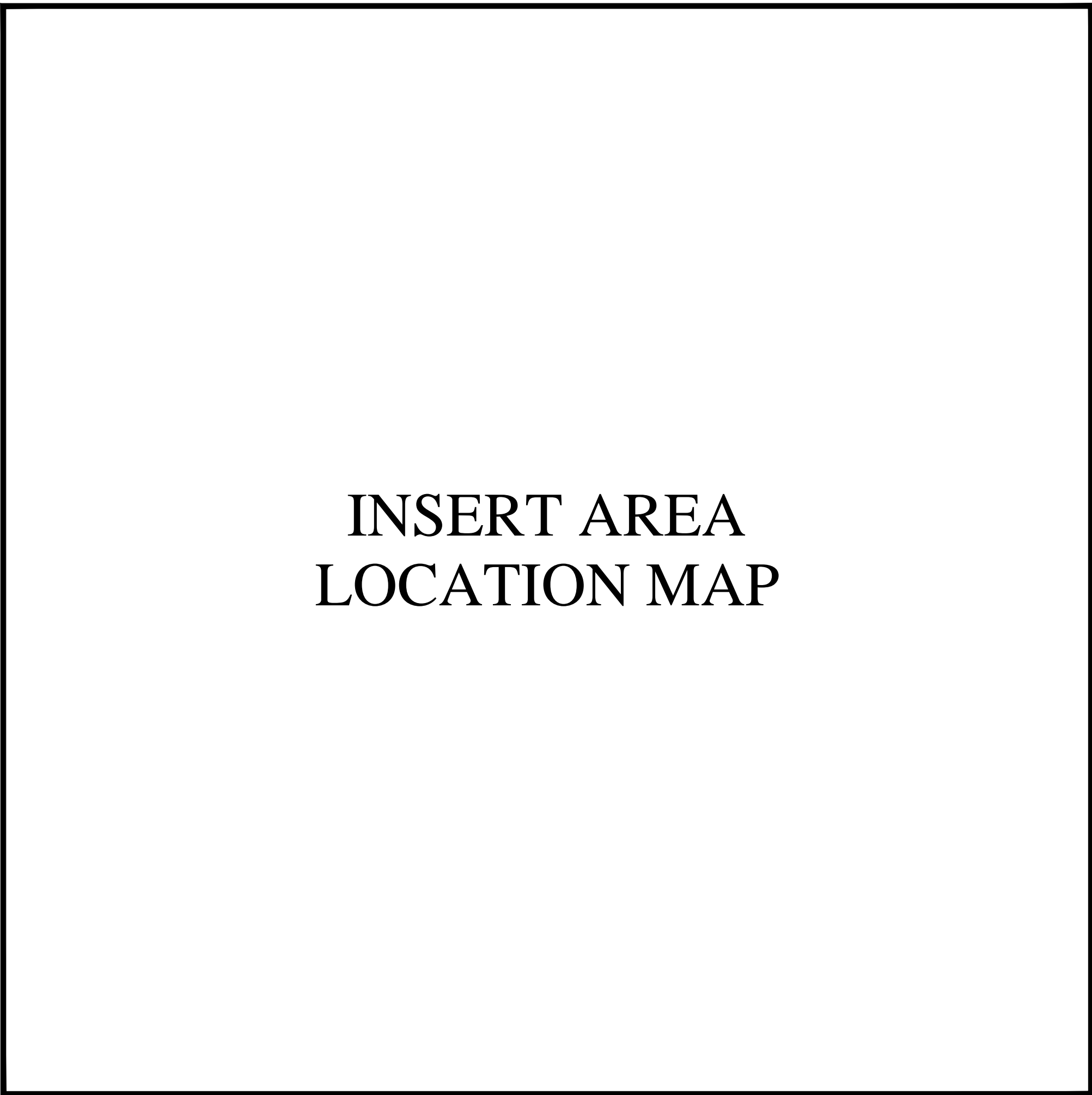
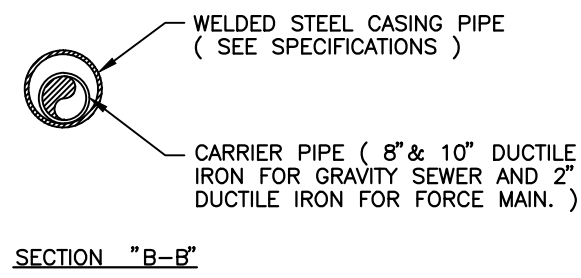


STANDARD SANITARY SEWER  
DRAWINGS & DETAILS FOR  
CITY OF JEFFERSONVILLE, INDIANA

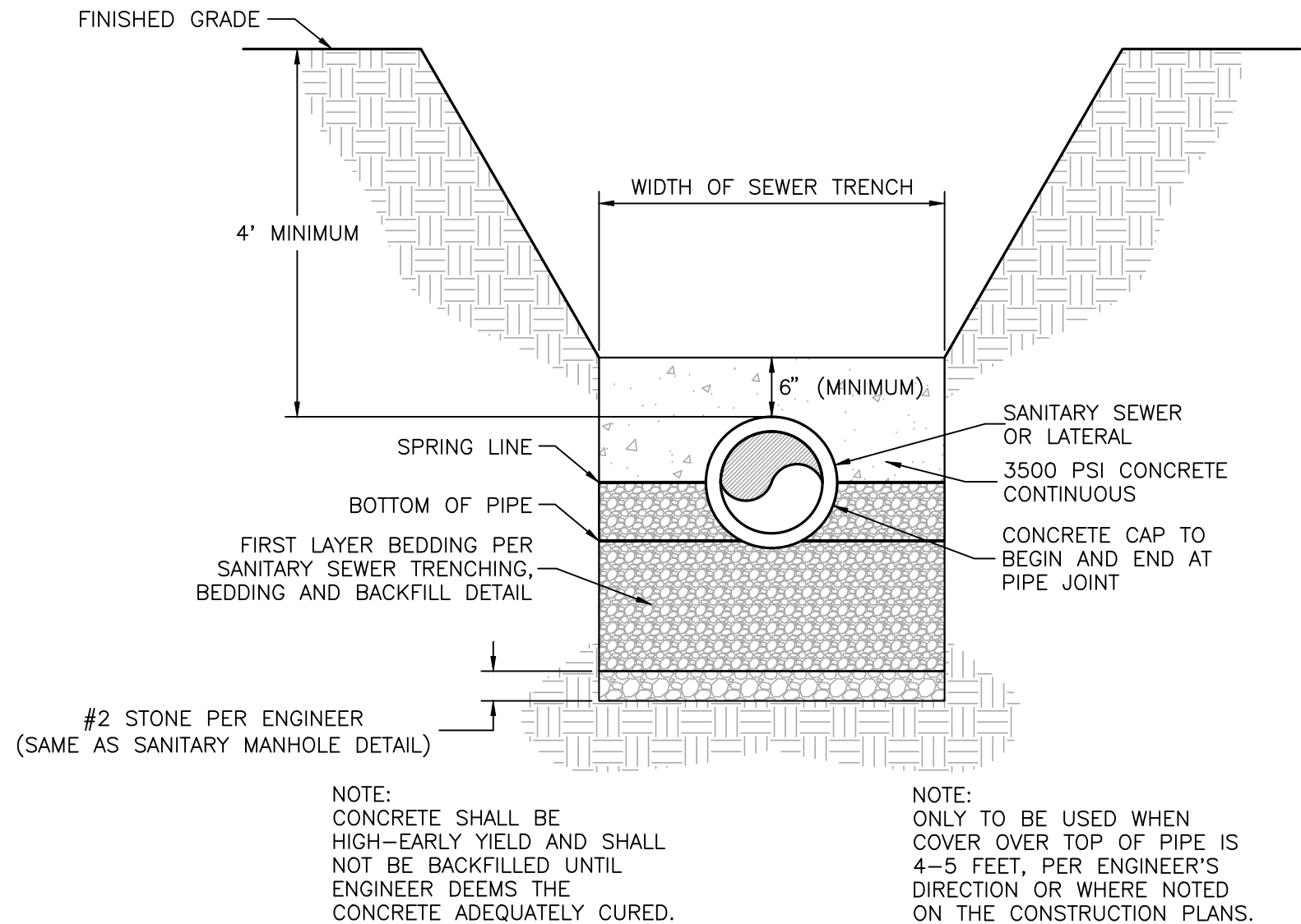
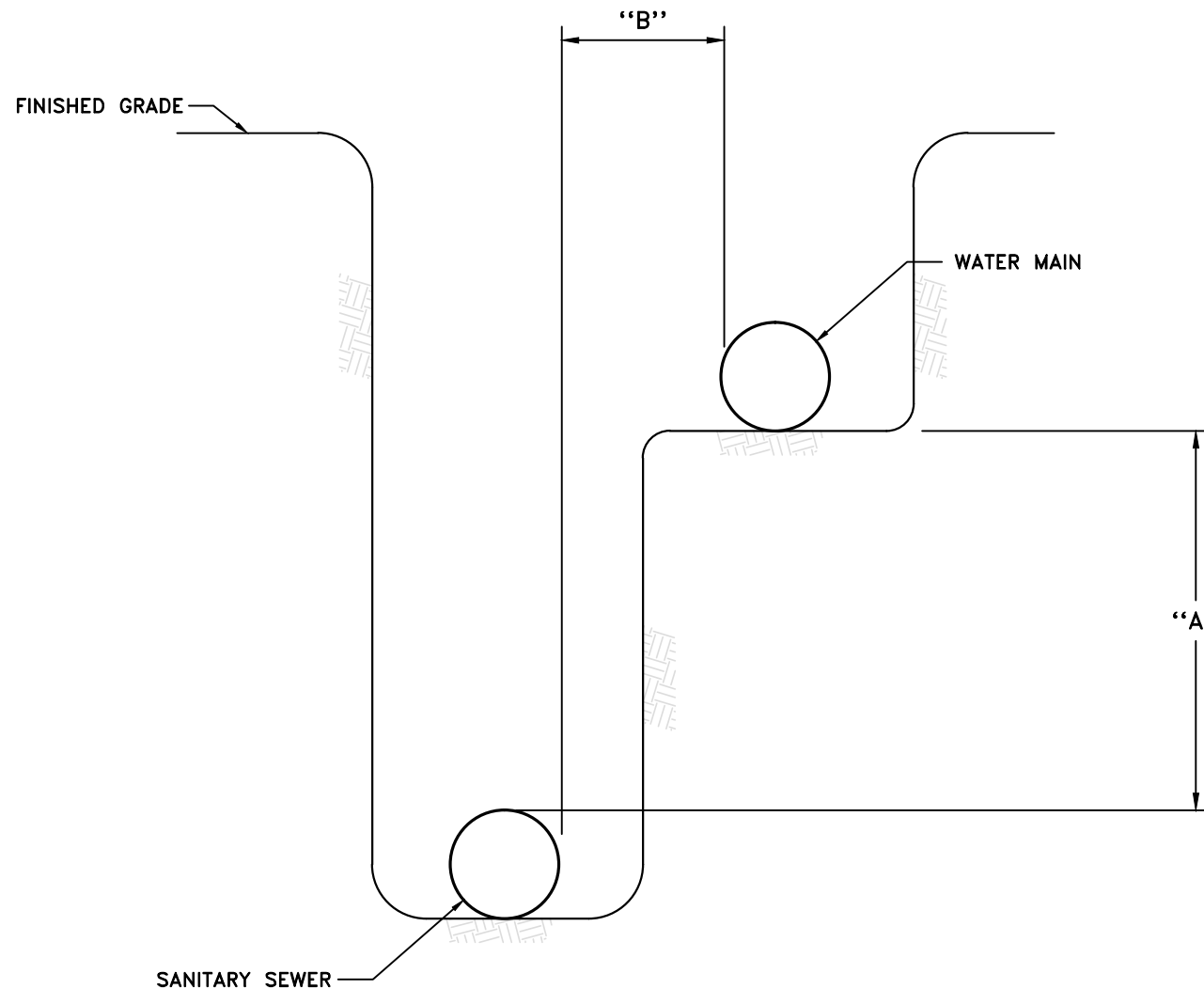
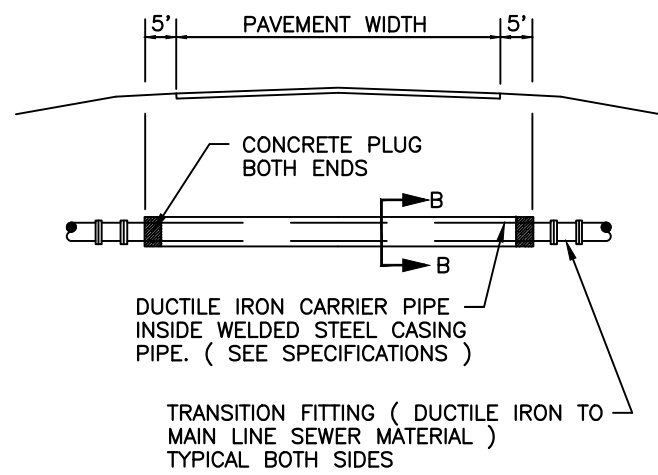


SHEET INDEX	
SHEET NO.	TITLE
1	COVER SHEET
2	PIPE BEDDING & CROSSING DETAILS
3	SANITARY SEWER STRUCTURE DETAILS
4	SANITARY LATERAL CONNECTION & MISC. DETAILS
5	FORCE MAIN DETAILS
6	ELECTRICAL CONTROL CABINET AND ENCLOSURE DETAILS
7	PUMP STATION DETAILS

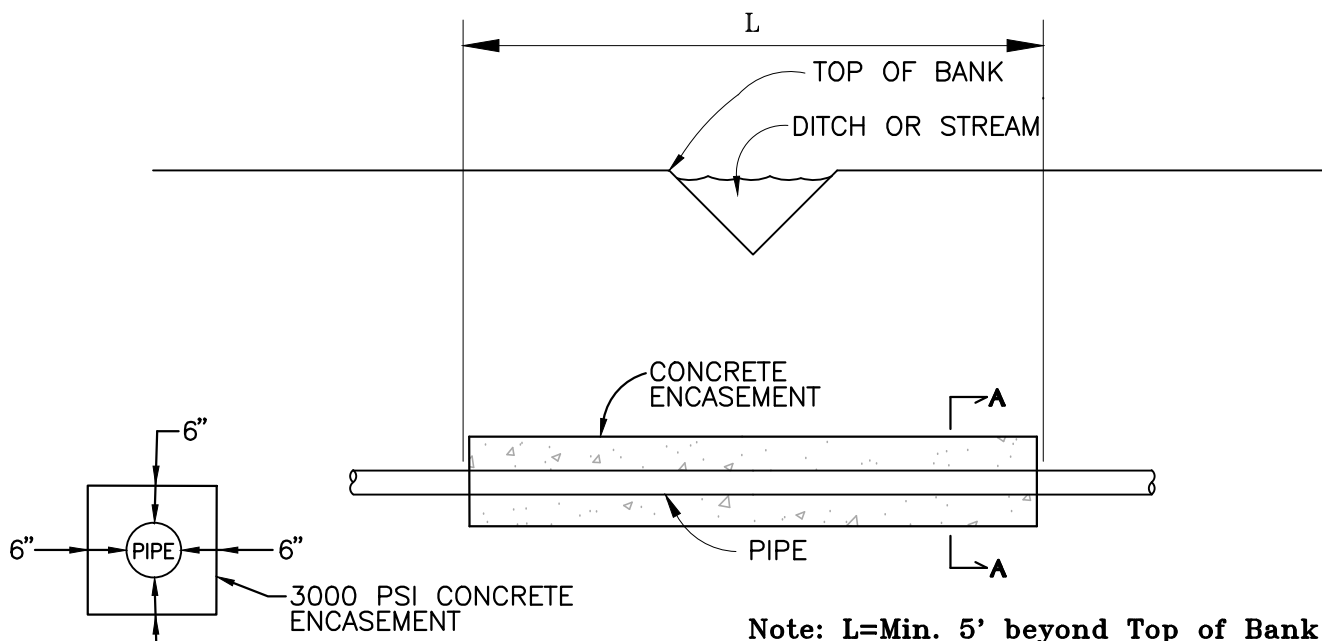
LOCATION MAP  
NOT TO SCALE



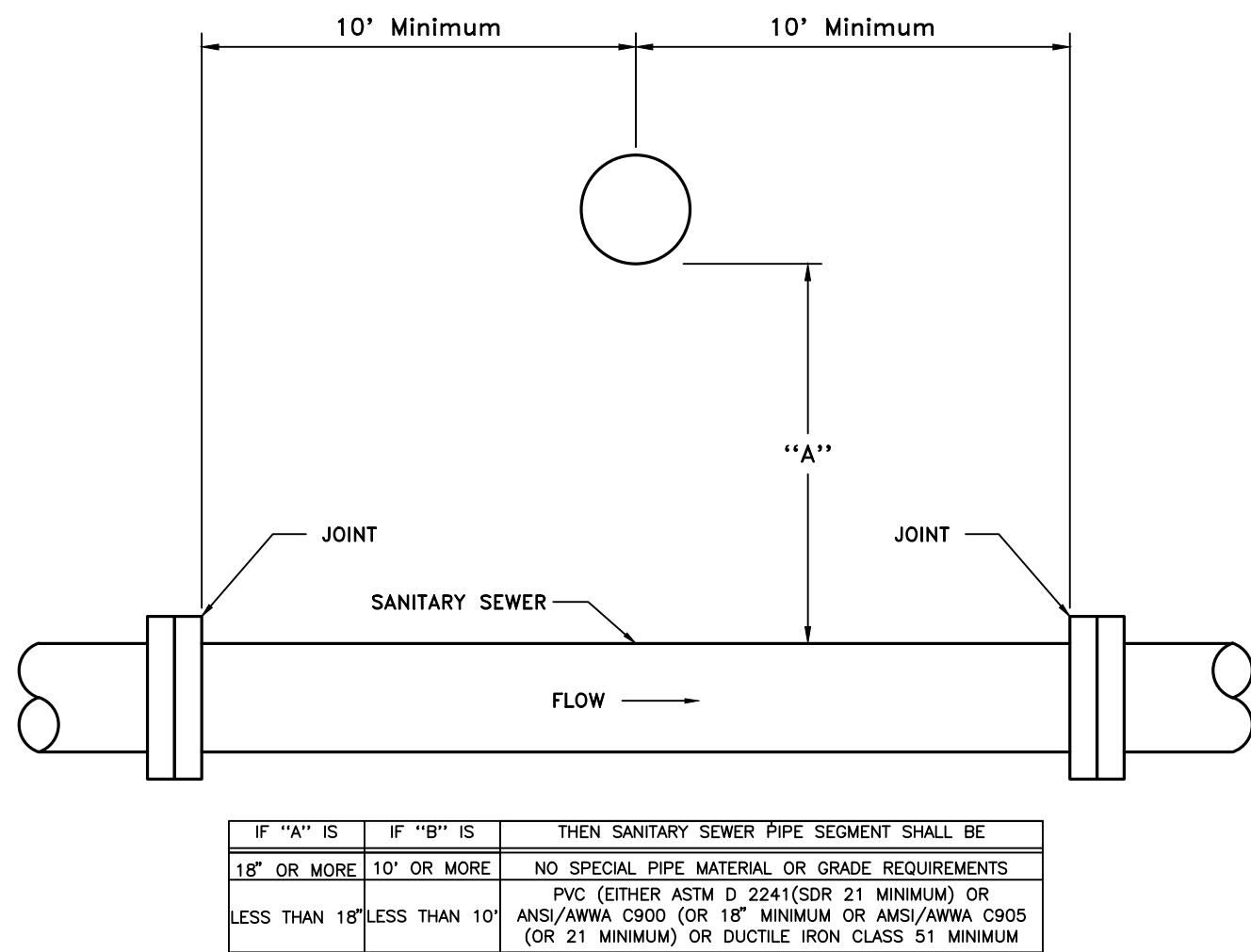
BORE & JACK DETAIL  
NO SCALE



CONCRETE CAP DETAIL  
NO SCALE



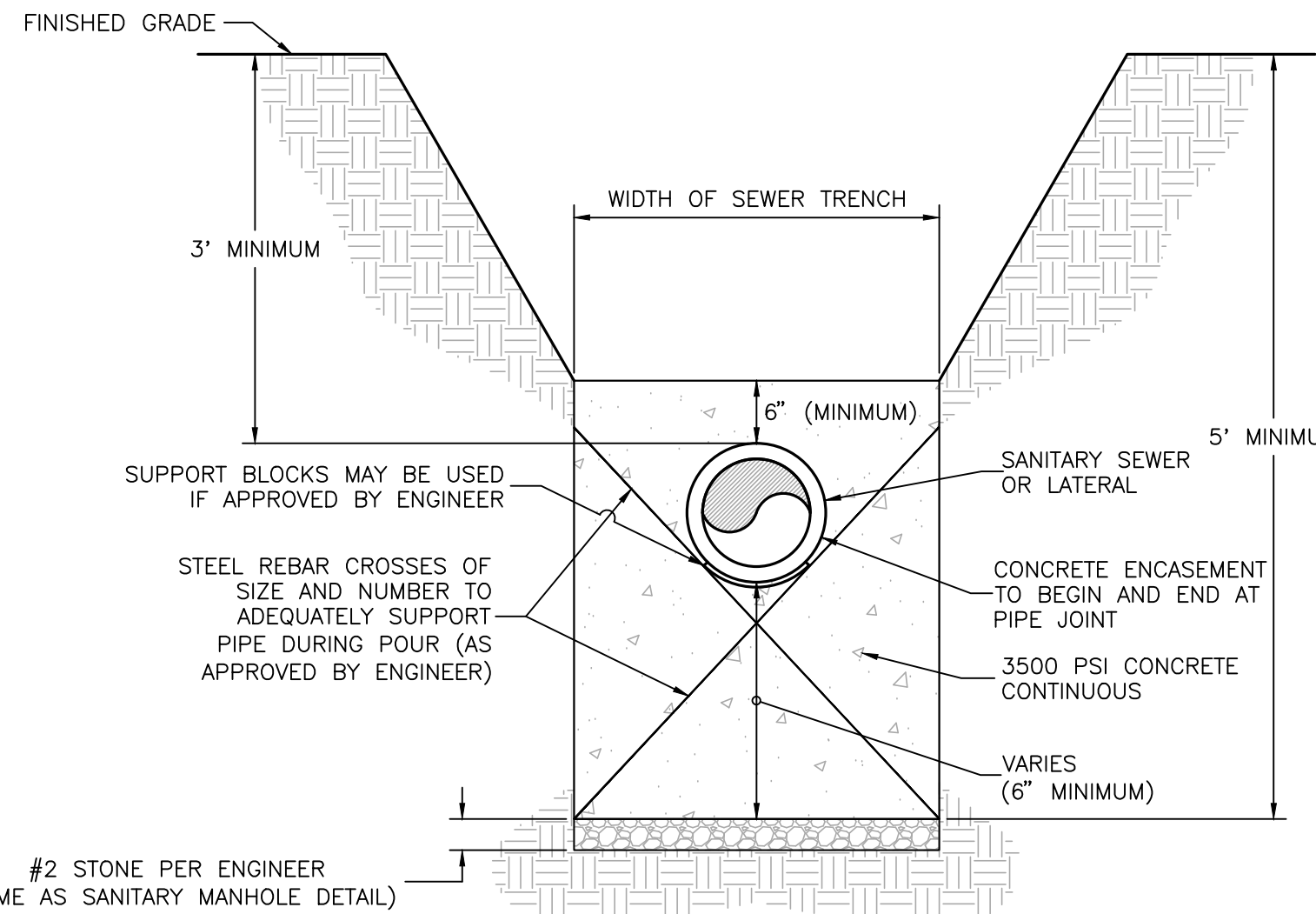
STREAM CROSSING-GRAVITY SEWER  
NO SCALE



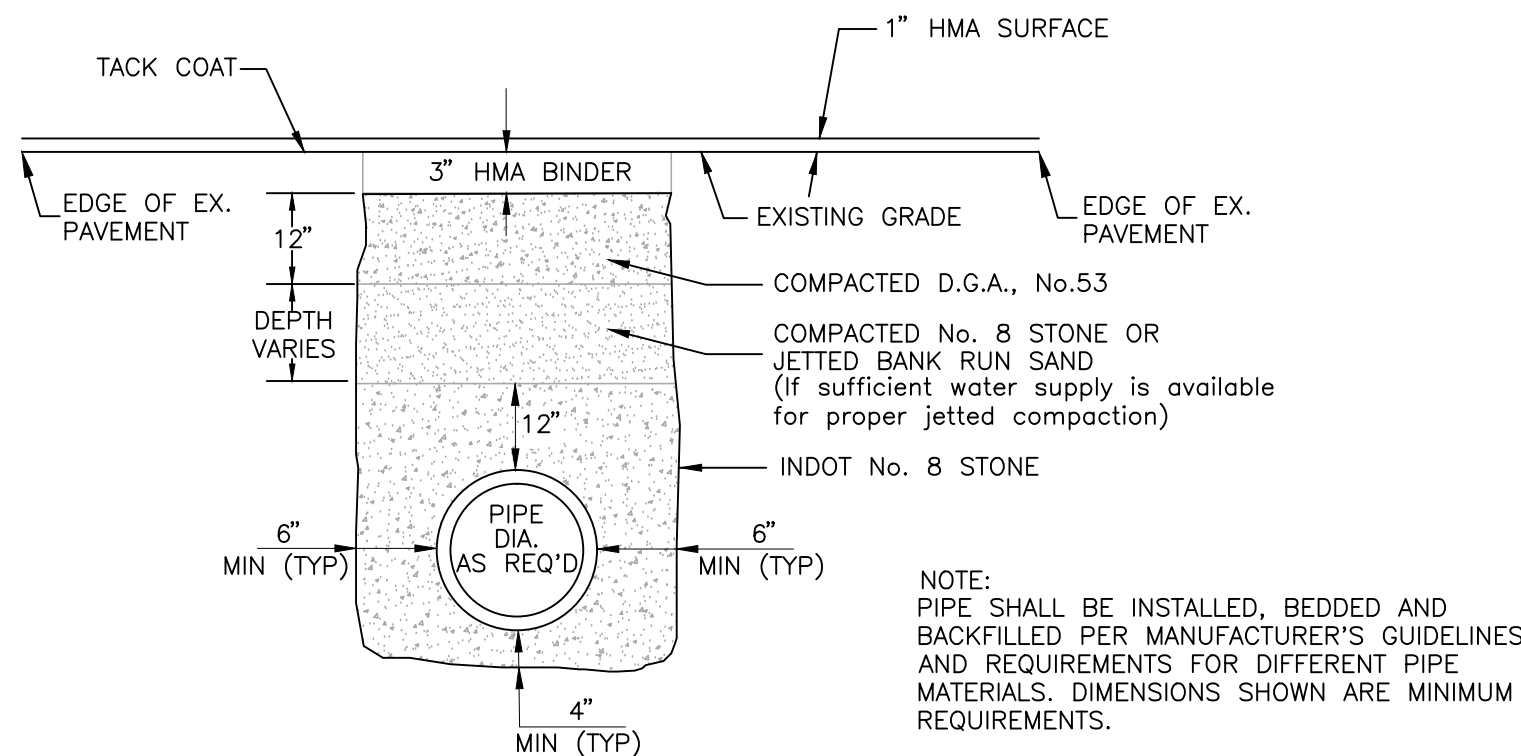
IF "A" IS	IF "B" IS	THEN SANITARY SEWER PIPE SEGMENT SHALL BE
18" OR MORE	10' OR MORE	NO SPECIAL PIPE MATERIAL OR GRADE REQUIREMENTS
LESS THAN 18"	LESS THAN 10'	PVC (EITHER ASTM D 2241 (SDR 21 MINIMUM) OR ANSI/AWWA C900 (OR 18" MINIMUM OR ANSI/AWWA C905 (OR 21" MINIMUM) OR DUCTILE IRON CLASS 51 MINIMUM

NOTE: SEPARATION DISTANCES FROM WATER SUPPLIES AND PIPE CLASSIFICATIONS SHALL CONFORM TO INDIANA STATE BOARD OF HEALTH'S "ON SITE WATER SUPPLY AND WASTEWATER DISPOSAL FOR PUBLIC AND COMMERCIAL ESTABLISHMENTS" - BULLETIN S.E. 13"

CITY of JEFFERSONVILLE, INDIANA  
WATER SUPPLY & SEWER CROSSING DETAIL

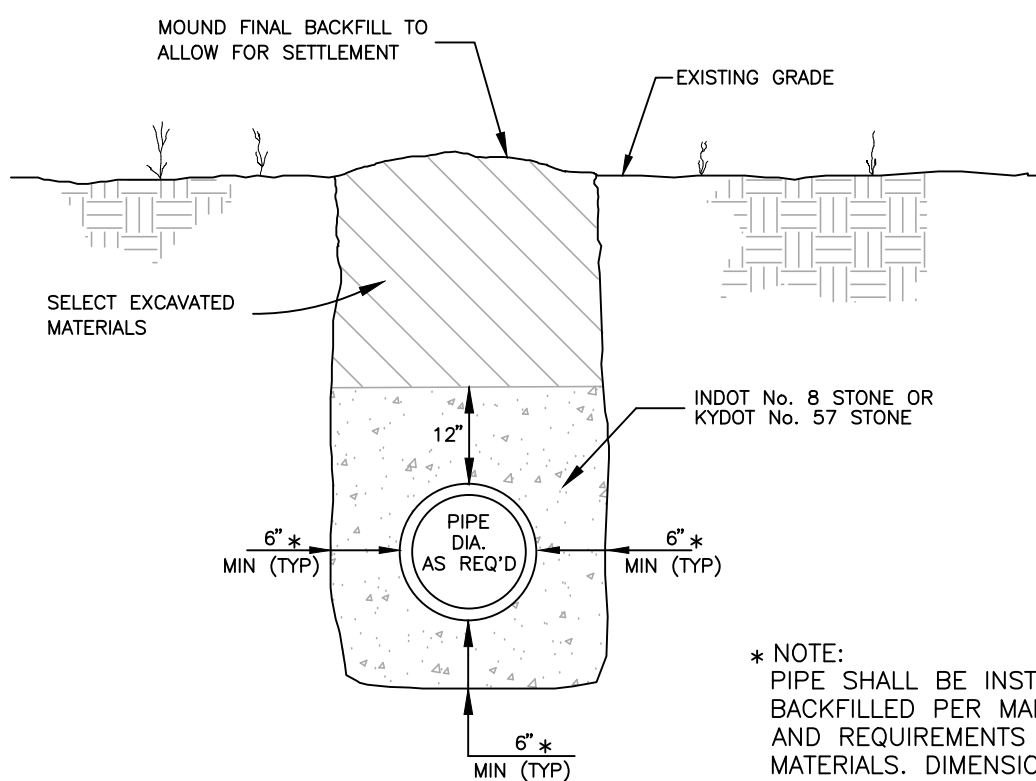


CONCRETE ENCASEMENT DETAIL  
NO SCALE



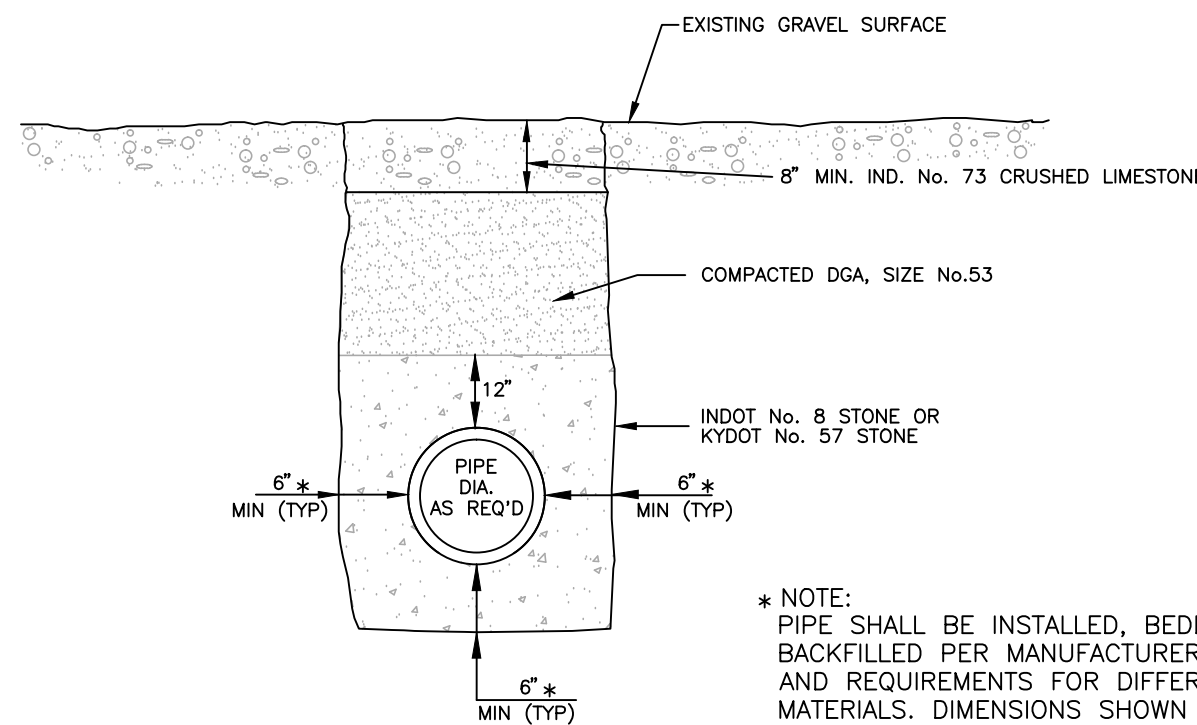
CITY of JEFFERSONVILLE, INDIANA  
PIPE BEDDING DETAIL  
IN PAVED AREAS AND  
OVERLAY DETAIL

NO SCALE  
(Type 1 Backfill)



CITY of JEFFERSONVILLE, INDIANA  
PIPE BEDDING DETAIL  
IN EARTH AREAS

NO SCALE  
(Type 2 Backfill)

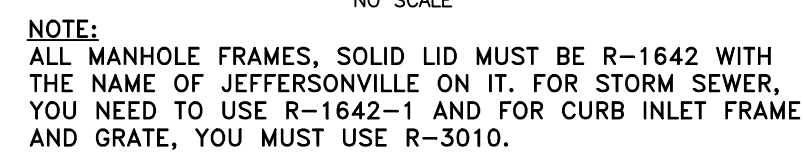
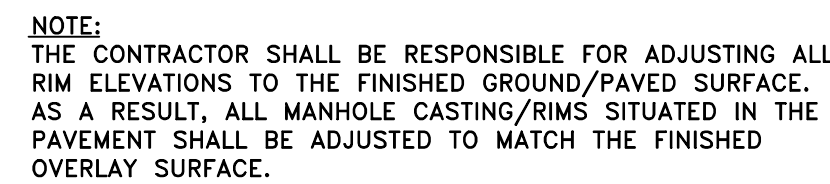
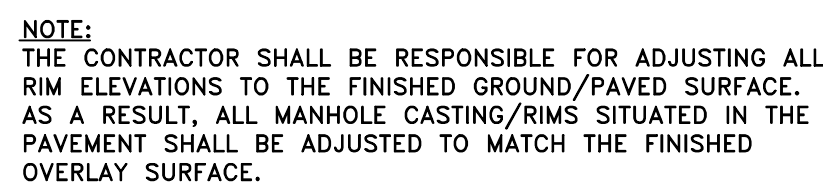
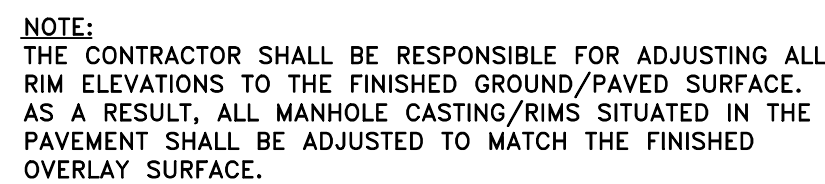


CITY of JEFFERSONVILLE, INDIANA  
PIPE BEDDING DETAIL  
IN GRAVELED AREAS

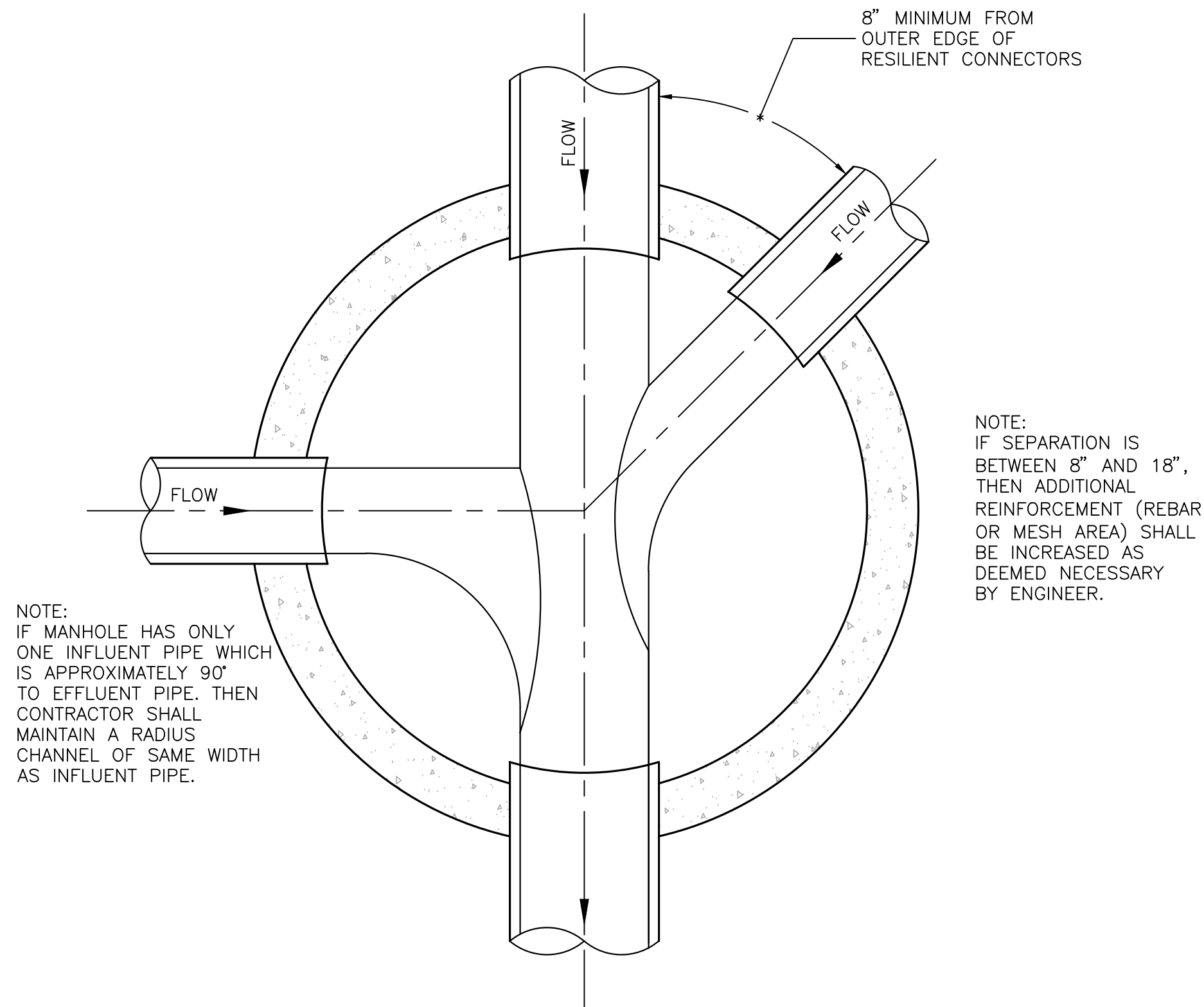
NO SCALE  
(Type 3 Backfill)







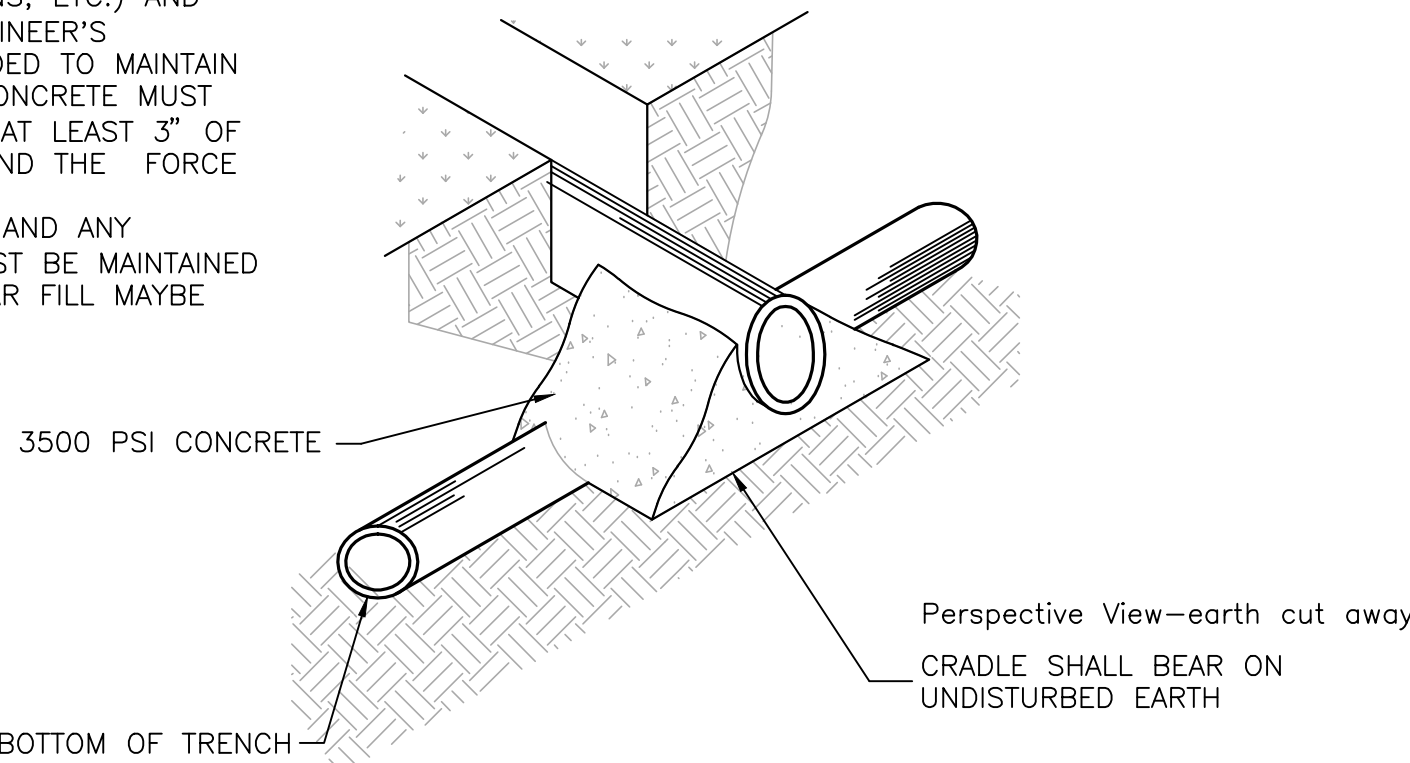




FLOW CHANNEL DETAIL

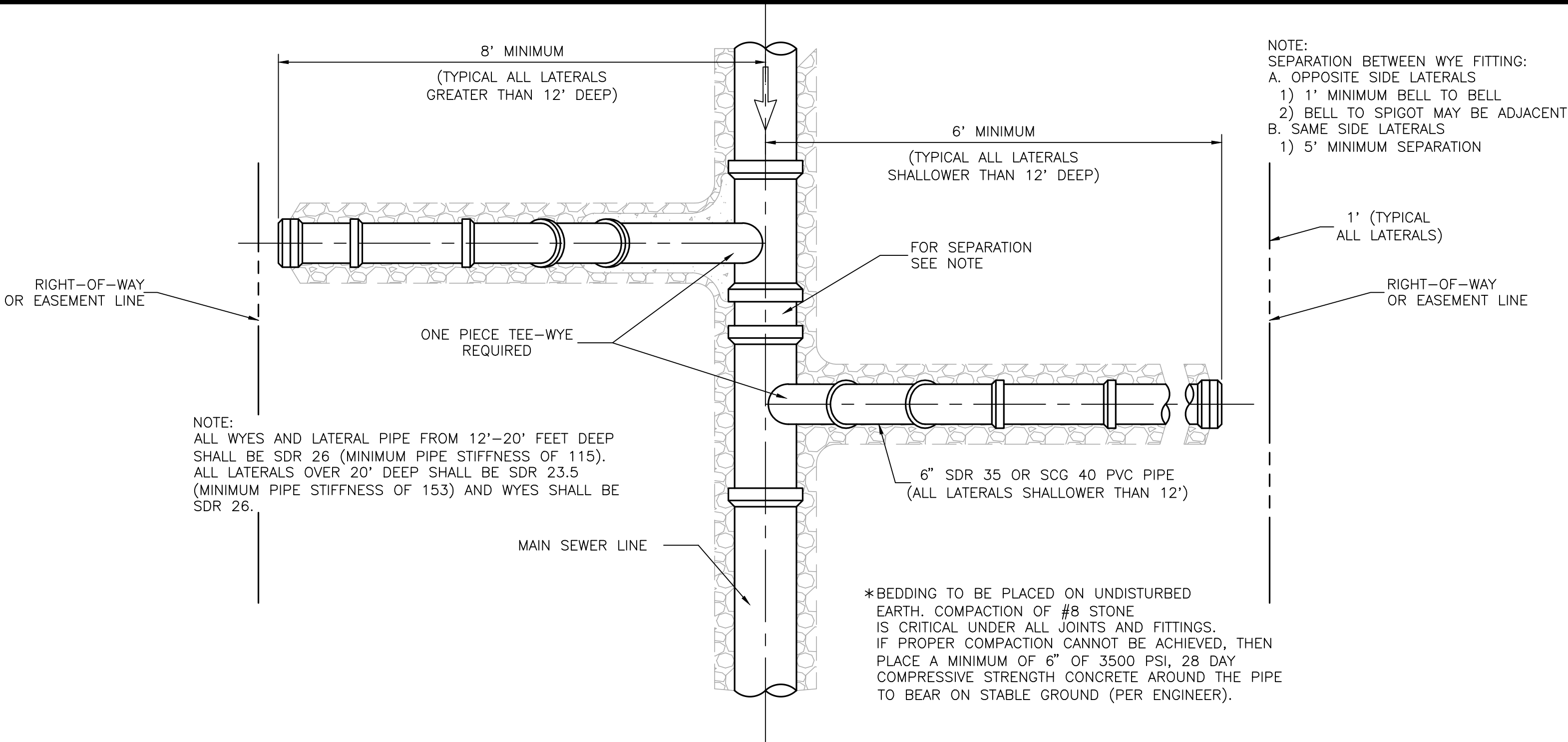
NO SCALE

NOTE:  
TO BE USED WHEN CLEAR DISTANCE (FROM EXTERIOR PIPE DIAMETER TO EXTERIOR PIPE DIAMETER) BETWEEN SANITARY SEWER PIPING (MAINS, LATERALS, FORCE MAINS, ETC.) AND ALL OTHER PIPES IS 18" OR LESS, PER ENGINEER'S DIRECTION, OR WHERE NOTED ON THE PROVIDED TO MAINTAIN STRUCTURAL INTEGRITY OF THE CONCRETE. CONCRETE MUST NOT COME INTO CONTACT WITH FORCE MAIN. AT LEAST 3" OF SAND MUST BE PLACED AS A CUSHION AROUND THE FORCE MAIN.  
IF THE CONFLICT IS BETWEEN A WATER MAIN AND ANY SANITARY SEWER PIPING, 18" CLEARANCE MUST BE MAINTAINED OR NOTE ABOVE APPLIES AND ONLY GRANULAR FILL MAYBE USED.

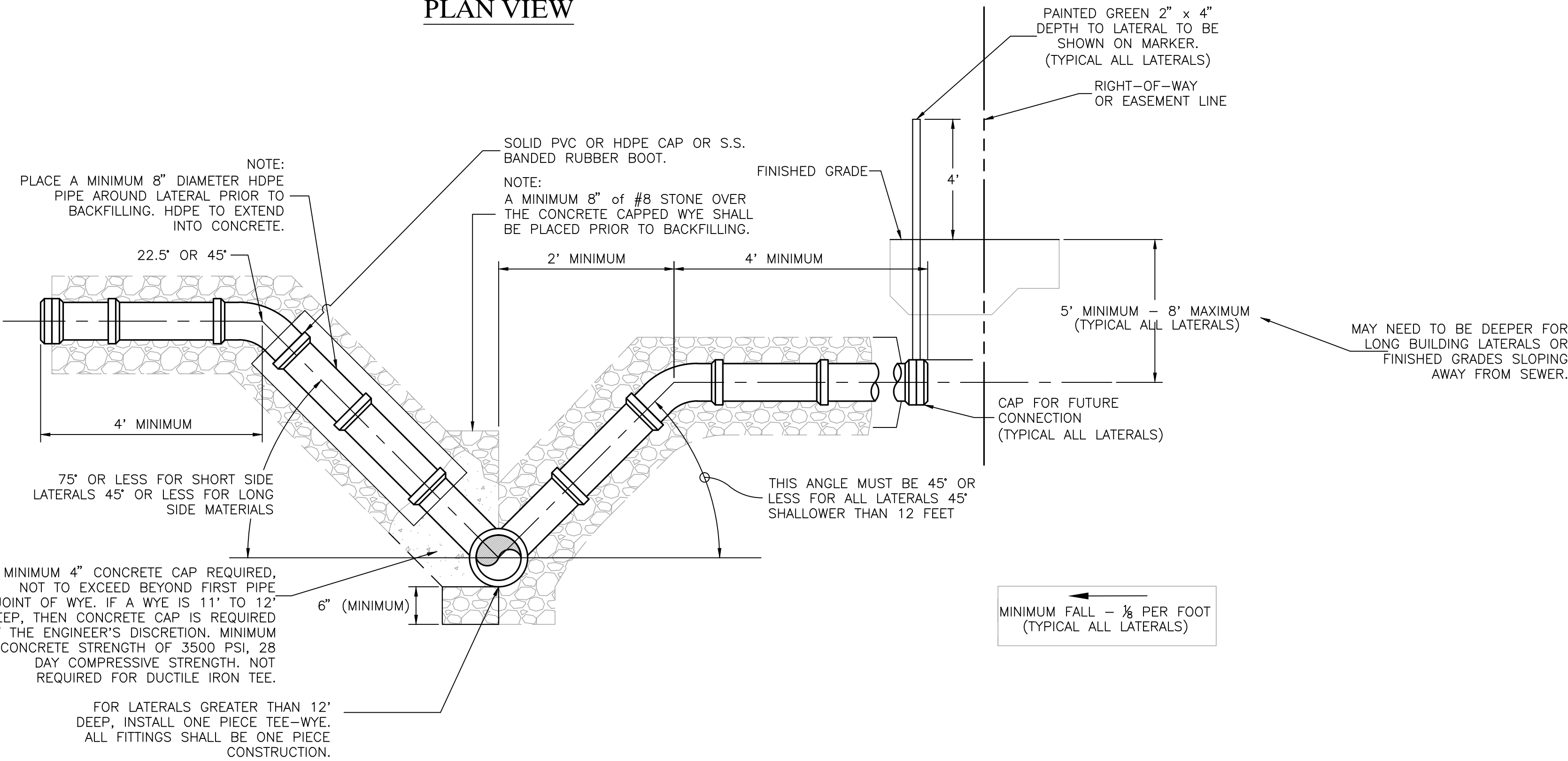


CONCRETE CRADLE DETAIL

NO SCALE



PLAN VIEW



SECTION

NOTE:  
ALL LATERAL BEDDING SHALL BE UNDISTURBED TRENCH.

MORE THAN 12' DEEP

LESS THAN 12' DEEP

NOTE:  
DEPTH OF SERVICE SHALL BE MEASURED FROM FINISHED GRADE TO THE TOP OF MAIN SEWER LINE.  
ALL PIPING FROM WYE 45°/22° FITTING AT 5'-8' BELOW GRADE BE SDR 26 TO 20' DEEP OR SDR 23.5 GREATER THAN 20' DEEP.

SERVICE LATERAL DETAIL

NO SCALE

DRAWN: D. HAYDEN

PROFESSIONAL ENGINEER'S SEAL

SANITARY SEWER PLANS  
CITY OF JEFFERSONVILLE  
SANITARY LATERAL CONNECTION  
& MISCELLANEOUS DETAILS  
JEFFERSONVILLE, IN



Revisions	

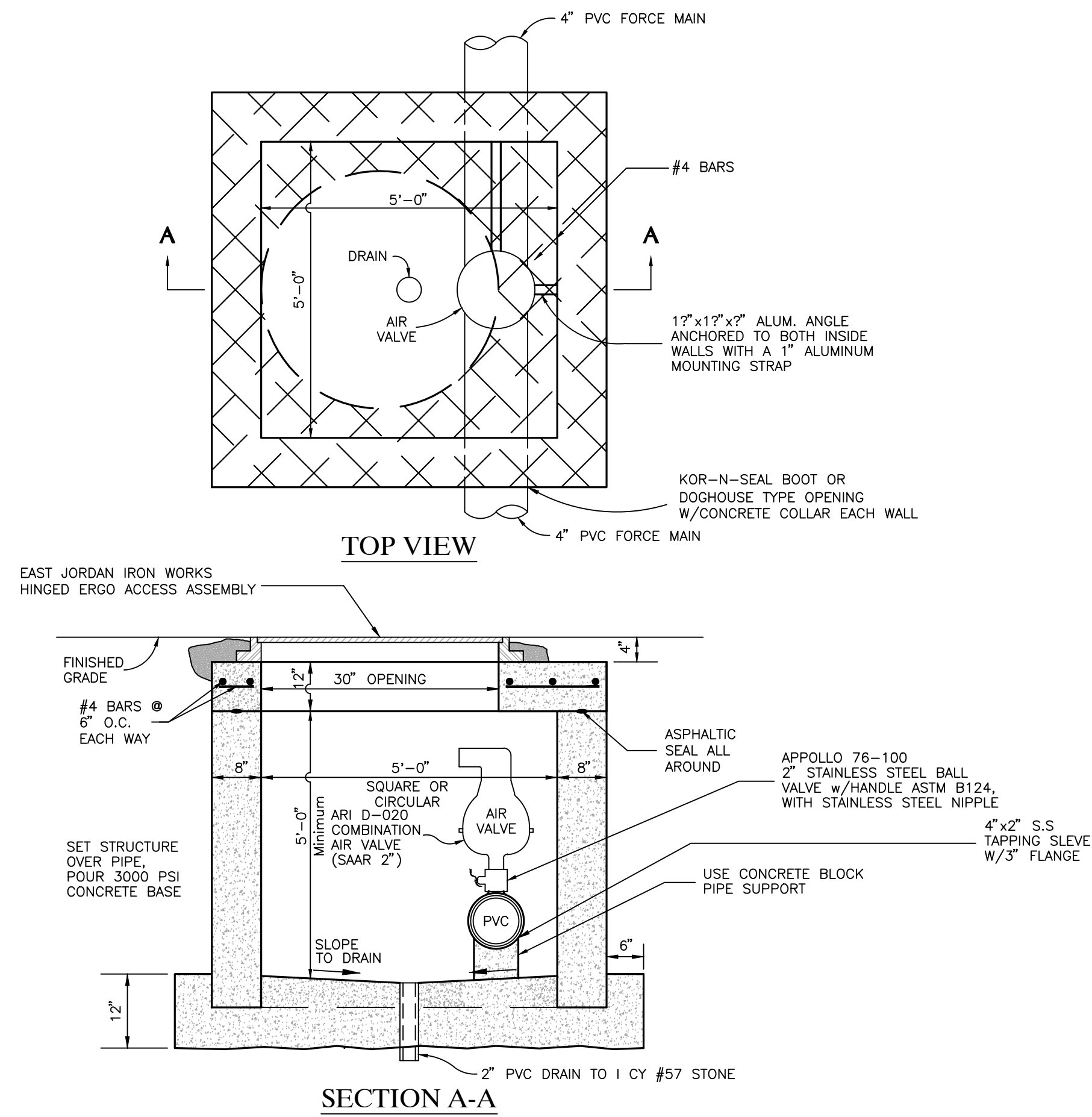
Vertical Scale: NOTED  
Horizontal Scale: NOTED  
Date: 2/5/2015

Sheet

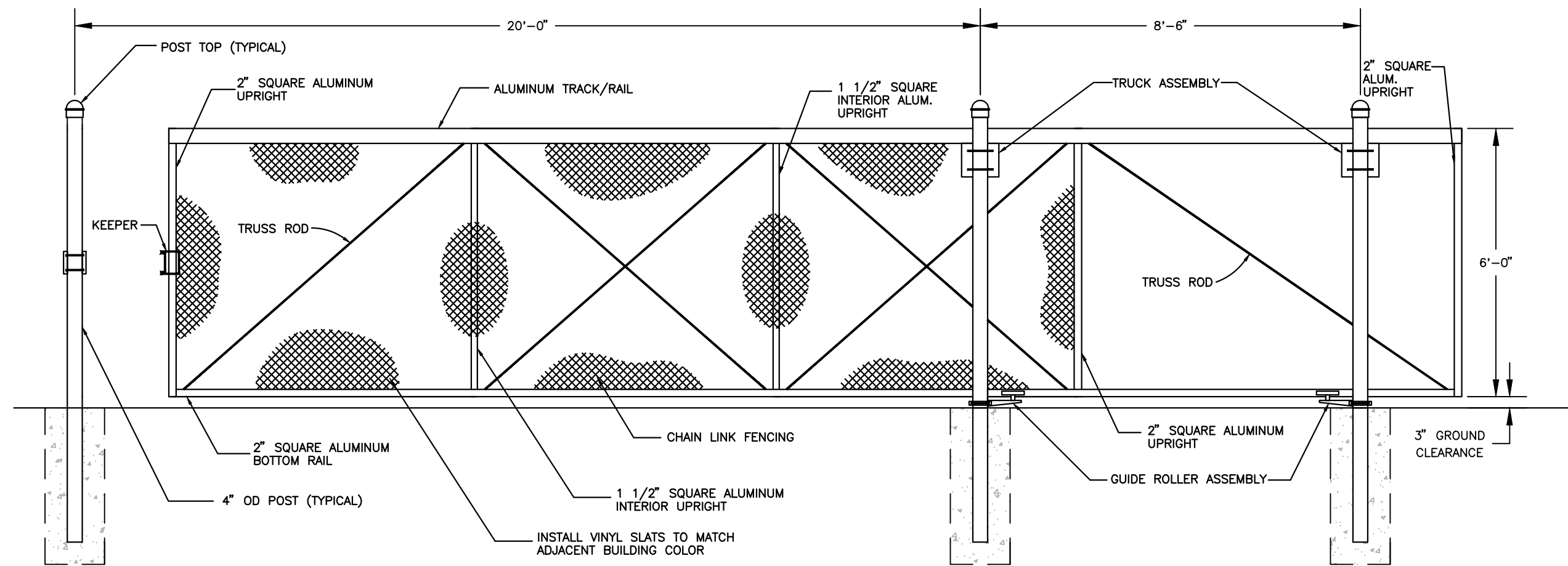
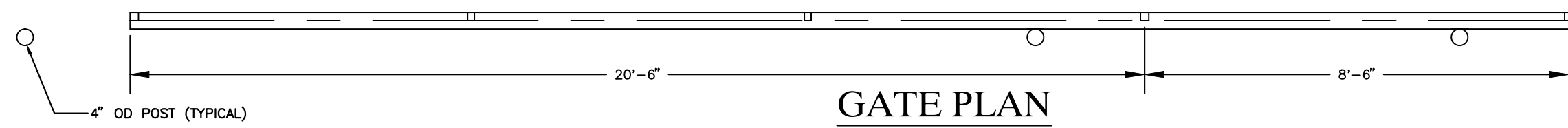
4

4 of 7





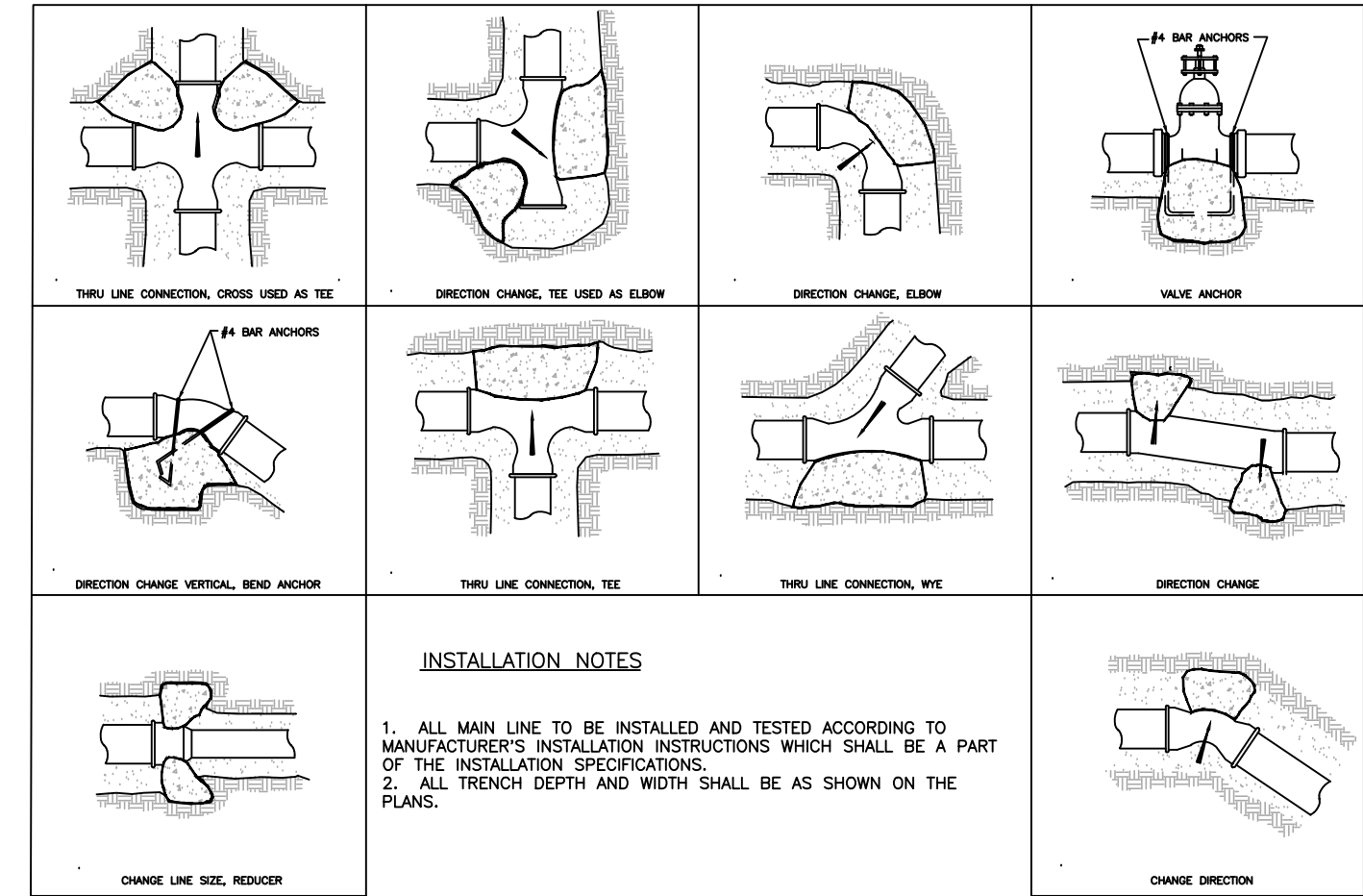
CITY OF JEFFERSONVILLE, INDIANA  
COMBINATION AIR RELEASE VALVE DETAIL  
NO SCALE



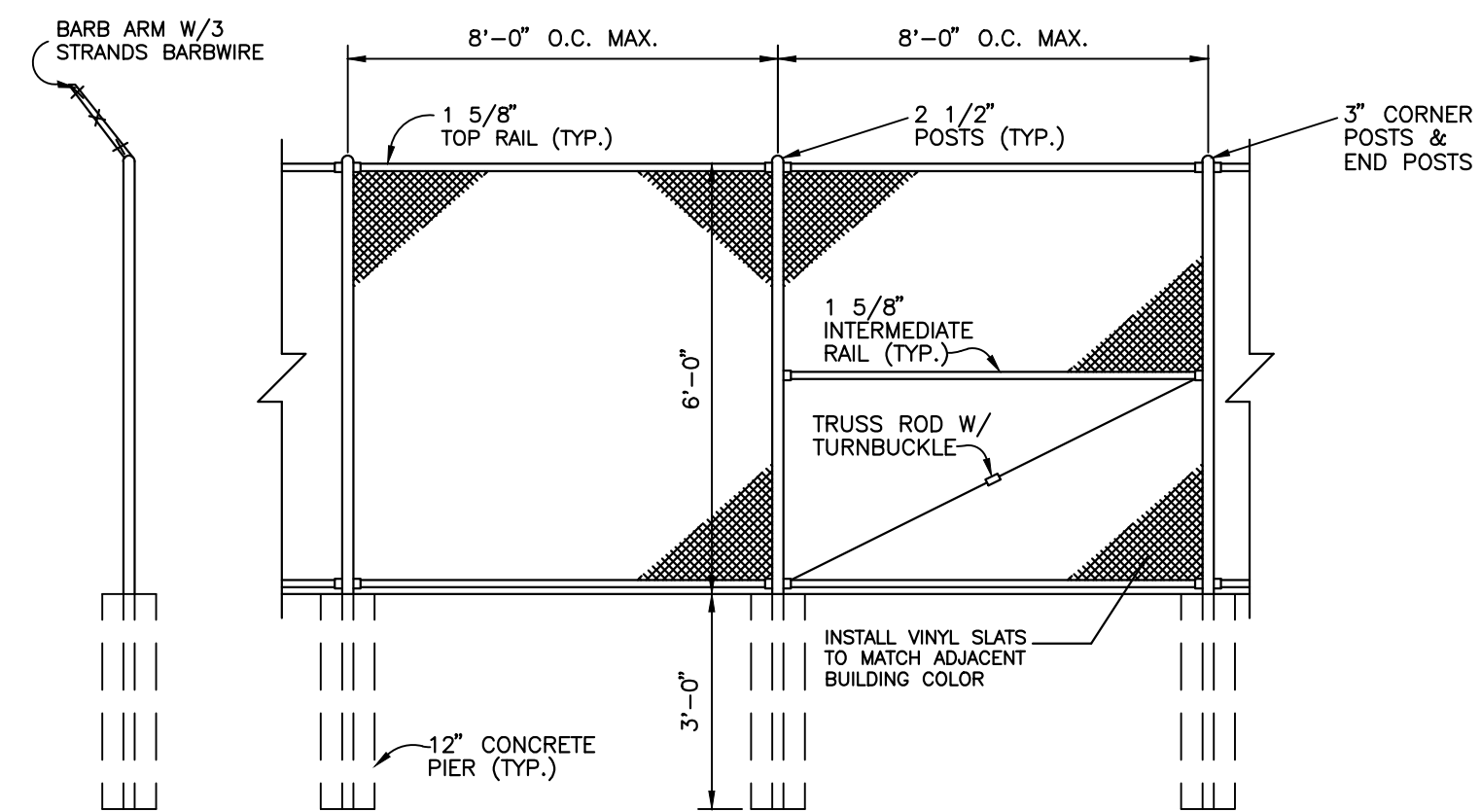
SLIDING CHAIN LINK GATE DETAIL  
NO SCALE

PIPE SIZE & TYPE OF FITTING	REQ'D AREA BEARING ON TRENCH WALL (SF)	MIN. CONCRETE VOLUME (CY)
4" - 90°	2.0	0.20
4" T OR PLUG	1.5	0.10
4" - 45°	1.0	0.10
4" - 22 1/2°	0.5	0.10
4" - 11 1/40°	0.5	0.10
8" - 90°	3.5	0.30
8" T OR PLUG	2.5	0.25
8" - 45°	2.0	0.20
8" - 22 1/2°	1.5	0.10
8" - 11 1/40°	1.0	0.10
10" - 90°	6.0	0.35
10" T OR PLUG	4.0	0.30
10" - 45°	3.0	0.25
10" - 22 1/2°	2.0	0.20
10" - 11 1/40°	1.0	0.10
12" - 90°	8.0	0.40
12" T OR PLUG	6.0	0.30
12" - 45°	4.5	0.30
12" - 22 1/2°	3.0	0.20
12" - 11 1/40°	2.0	0.10

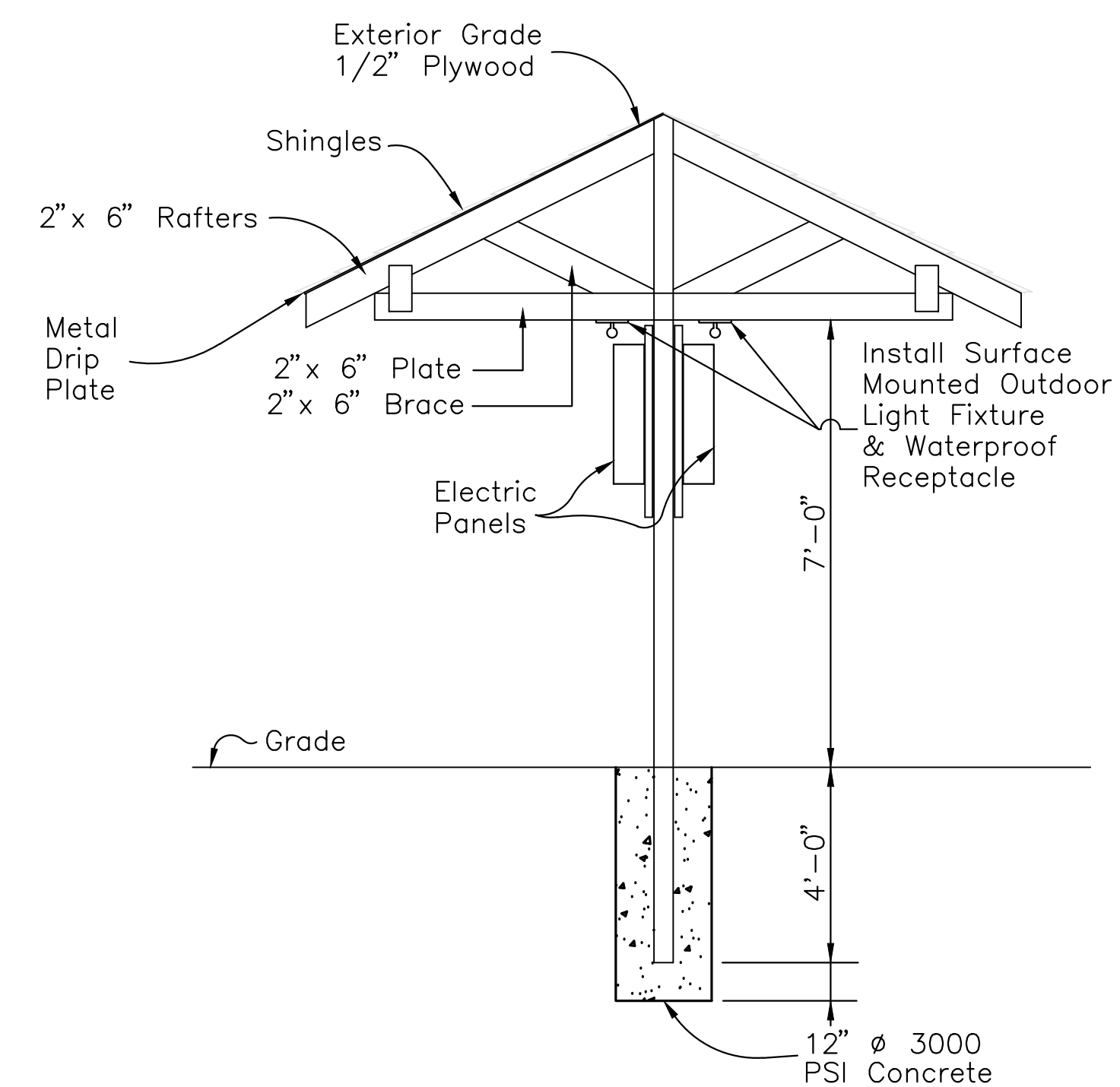
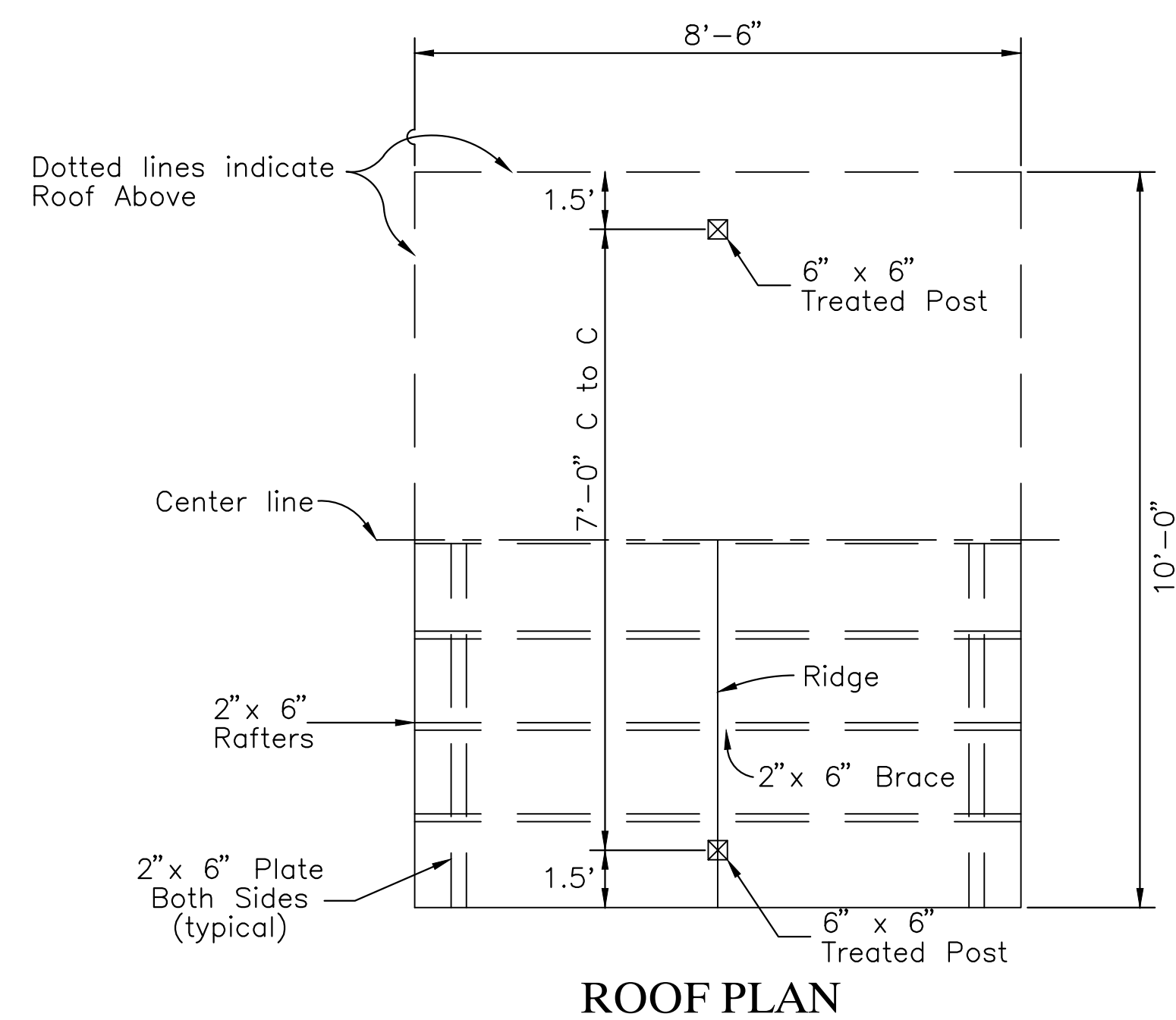
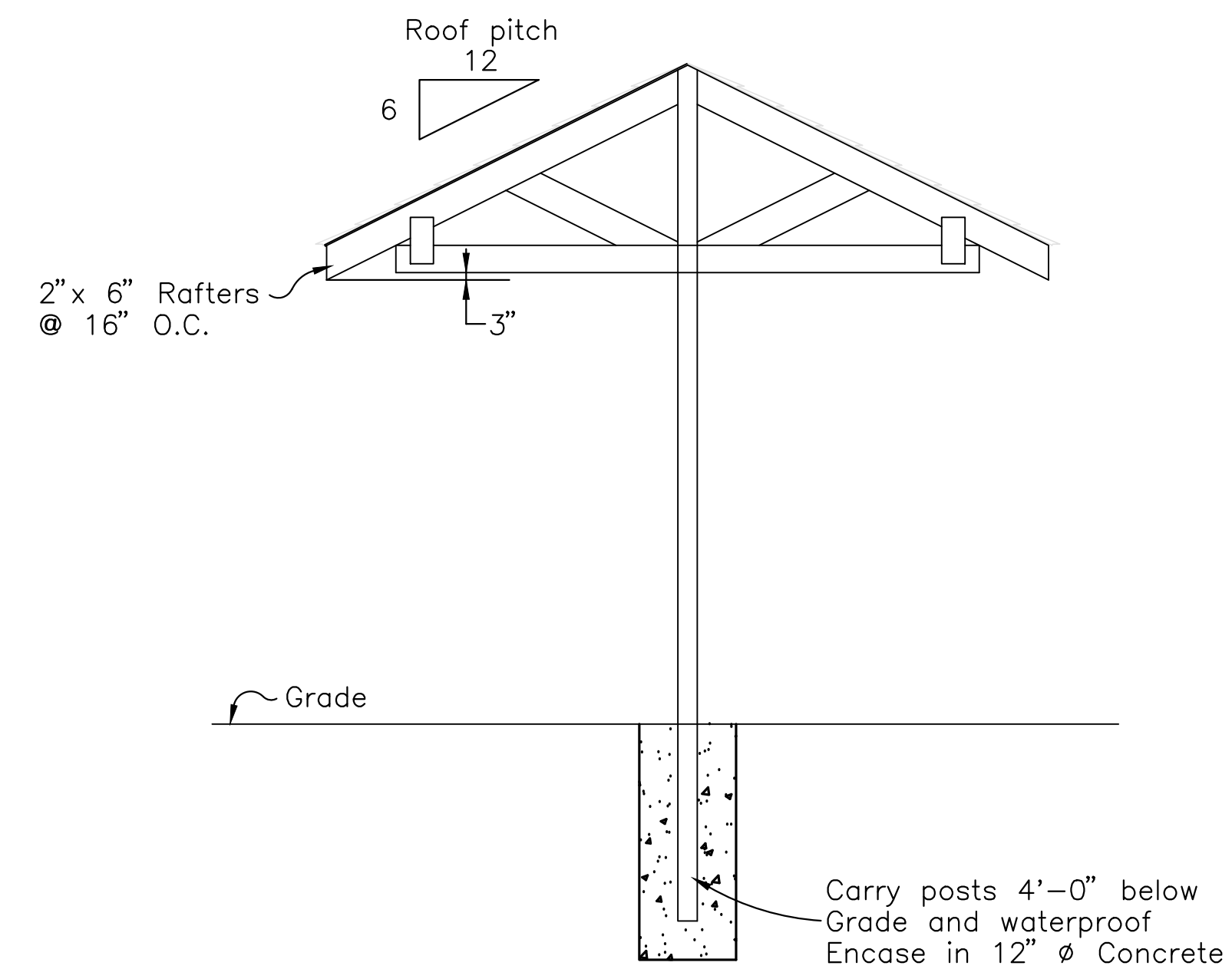
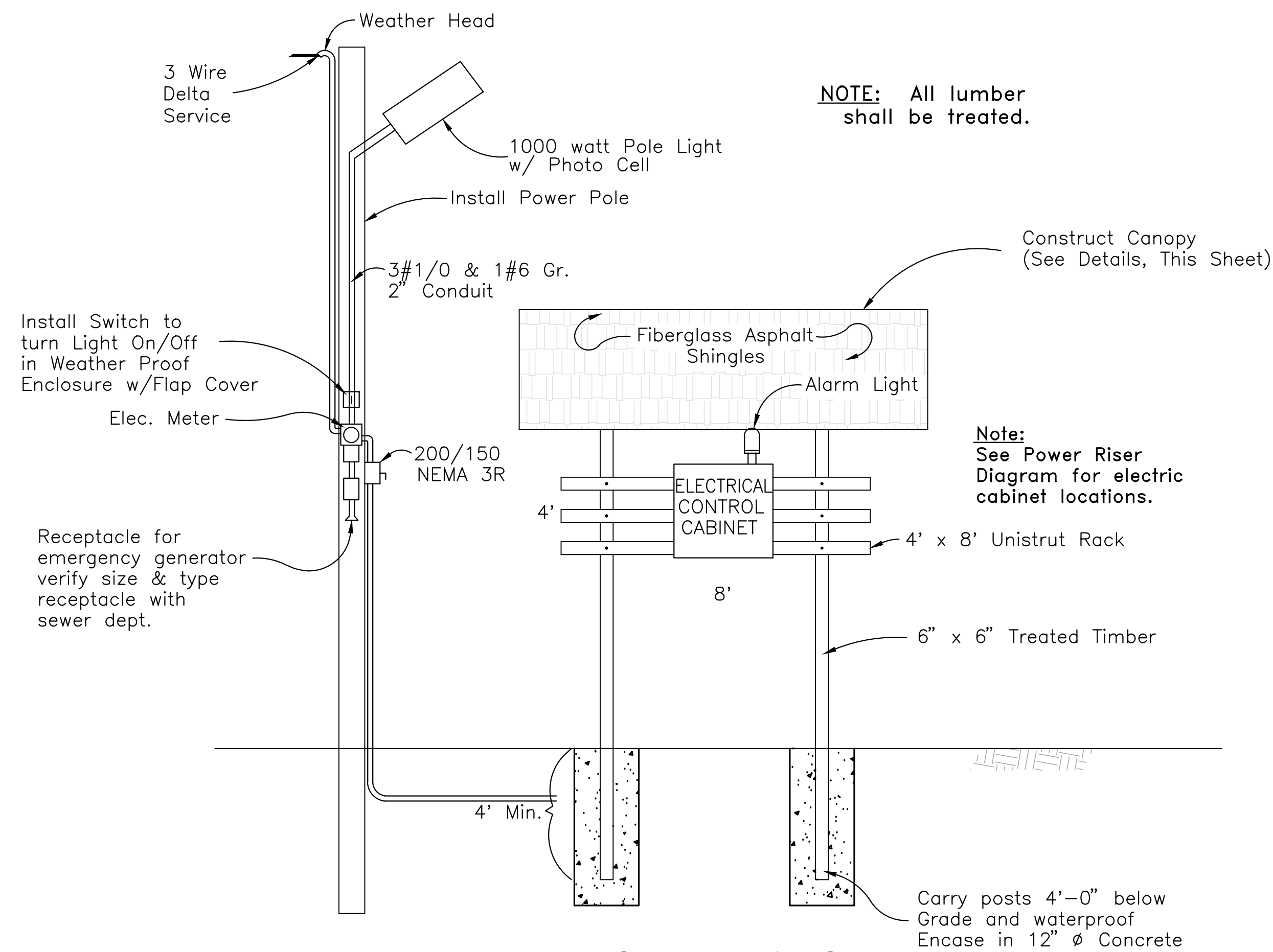
THRUST BLOCK REQUIREMENTS  
(OTHER FORCE MAIN SIZES AS NECESSARY)



TYPICAL THRUST BLOCK DETAILS  
FOR WATER SERVICE



CHAIN LINK FENCE DETAIL  
NO SCALE





- VALVE VAULT

①

ARI 2" Air Release Valve, D-020

②

Check Valve with Outside Weight and Lever and Bottom Buffer Oil Control Cylinder

③

Plug Valve

④

Pressure Gauge, 0-100 PSI, Ashcroft or Equal, with Ball Valve

⑤

45° Bend

⑥

Wye Branch

⑦

Force Main

⑧

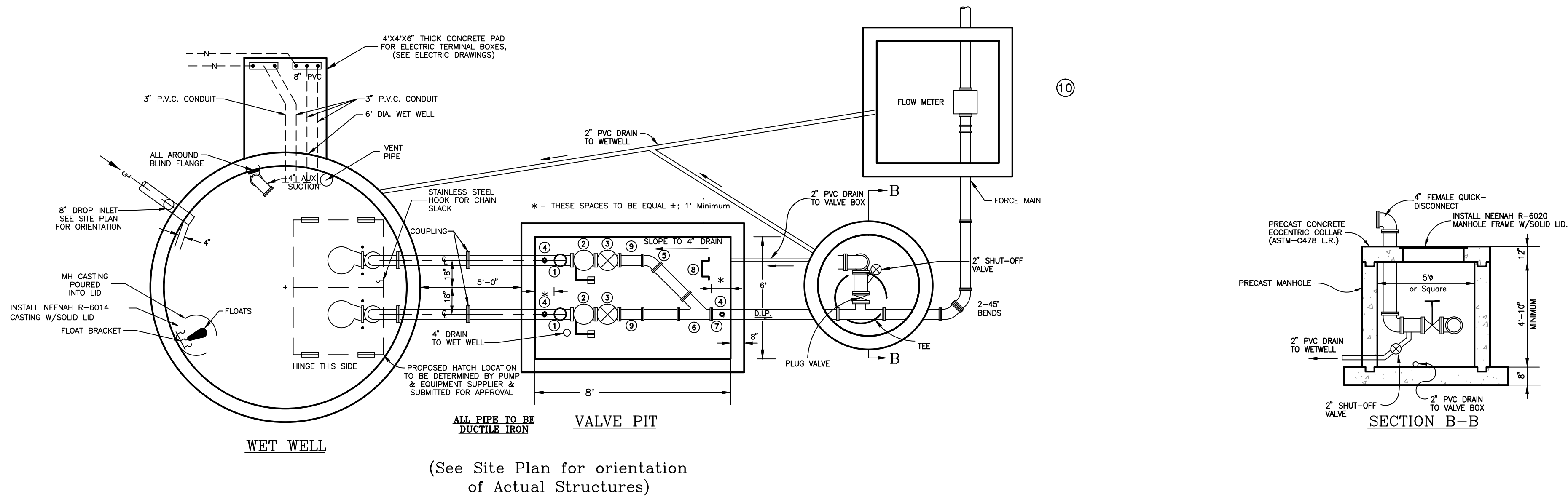
OSHA Compliant Aluminum Ladder with Intermediate Support to Valve Wall, Bilco Ladder Up Safety Post

⑨

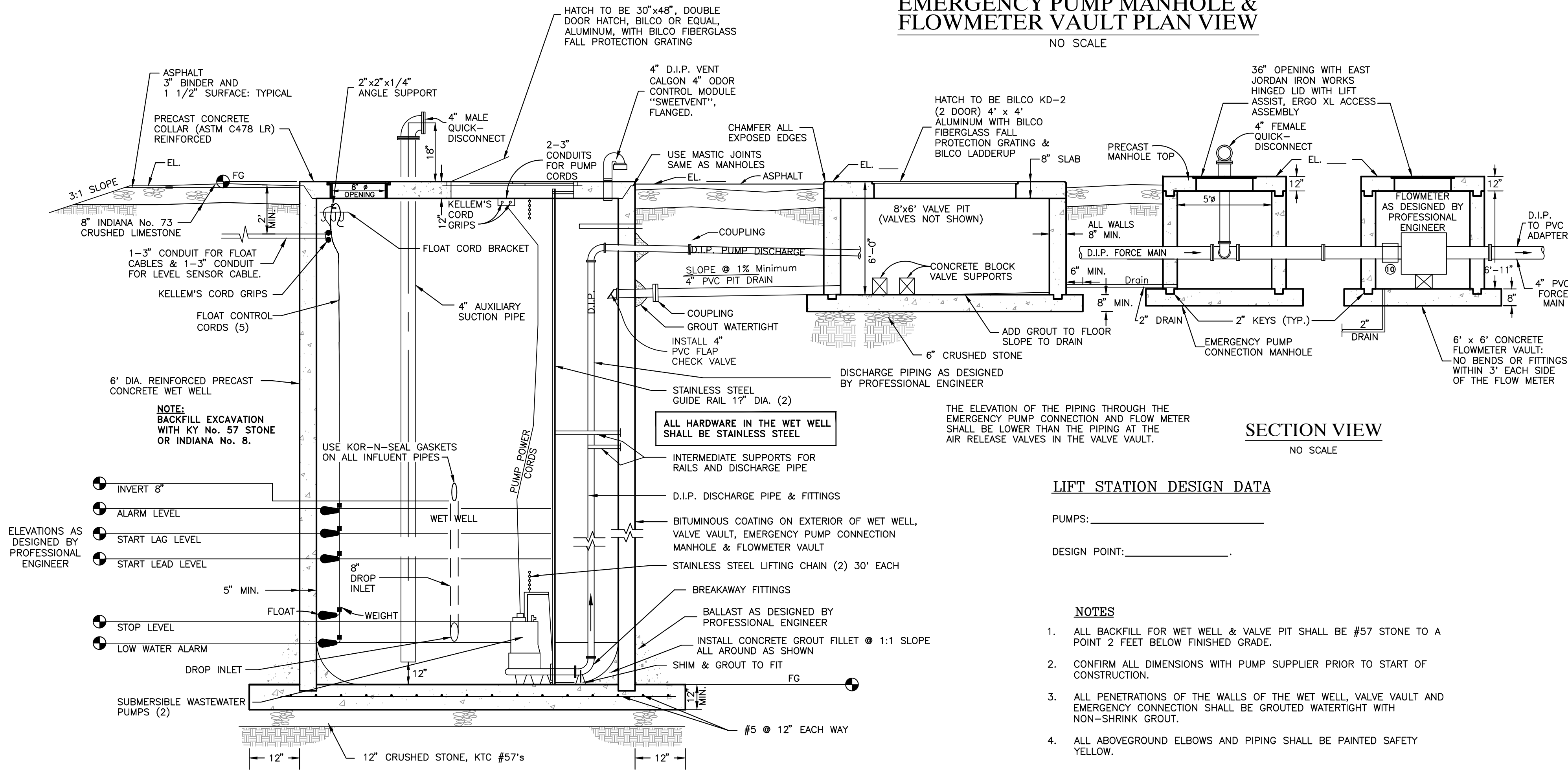
Romac DJ400 Dismantling Joint
- FLOW METER VAULT

⑩

Romac DJ400 Dismantling Joint



WET WELL, VALVE PIT,  
EMERGENCY PUMP MANHOLE &  
FLOWMETER VAULT PLAN VIEW  
NO SCALE



SECTION VIEW  
NO SCALE

LIFT STATION DESIGN DATA

PUMPS: \_\_\_\_\_  
DESIGN POINT: \_\_\_\_\_

NOTES

- ALL BACKFILL FOR WET WELL & VALVE PIT SHALL BE #57 STONE TO A POINT 2 FEET BELOW FINISHED GRADE.
- CONFIRM ALL DIMENSIONS WITH PUMP SUPPLIER PRIOR TO START OF CONSTRUCTION.
- ALL PENETRATIONS OF THE WALLS OF THE WET WELL, VALVE VAULT AND EMERGENCY CONNECTION SHALL BE GROUTED WATERTIGHT WITH NON-SHRINK GROUT.
- ALL ABOVEGROUND ELBOWS AND PIPING SHALL BE PAINTED SAFETY YELLOW.



Revisions	

Vertical Scale: NOTED  
Horizontal Scale: NOTED  
Date: 2/5/2015

Sheet

7

7 of 7