



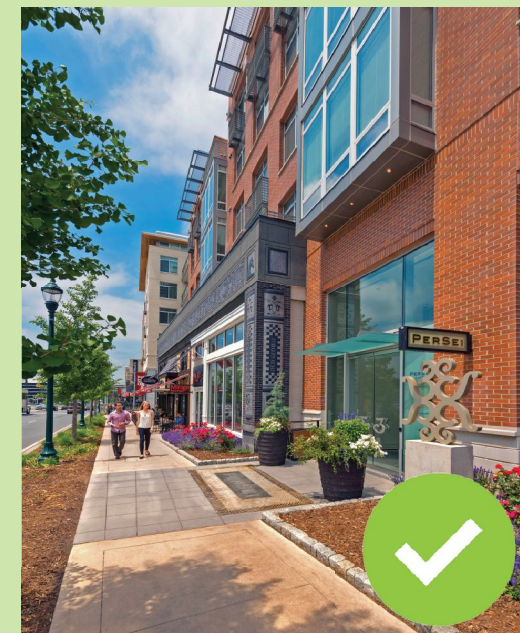
# Materials and Architecture

## Downtown Residential Overlay District:

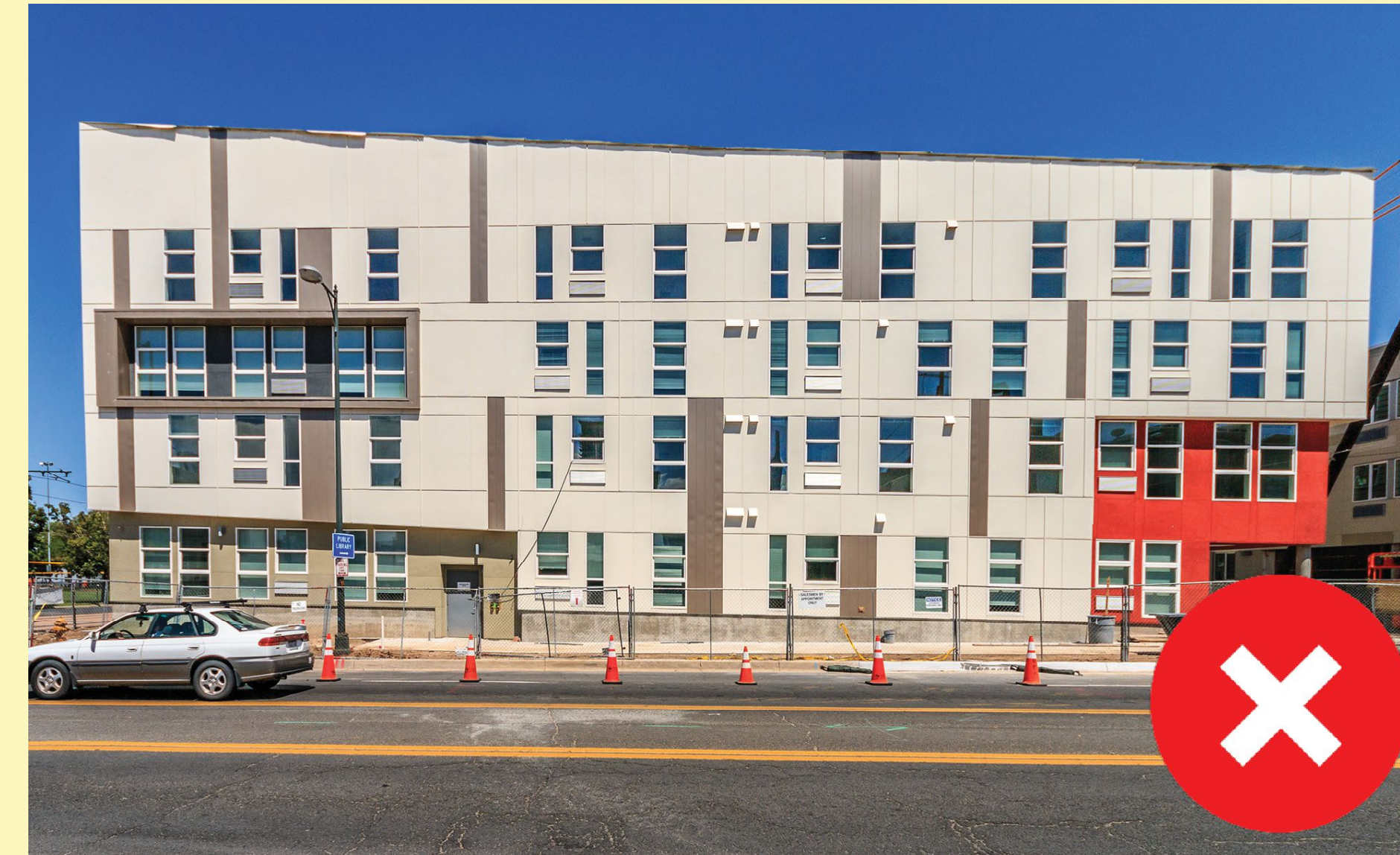
### Building Elevations - Allowed



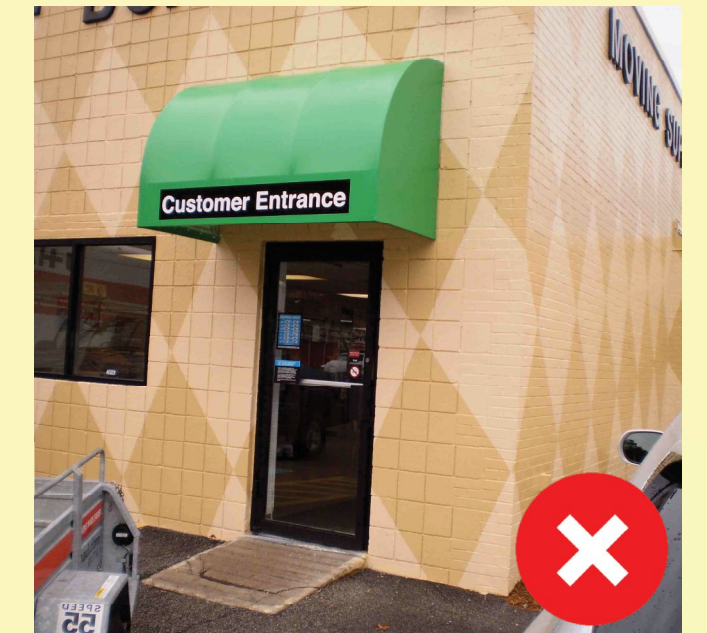
- Appropriate materials
- Changes in surface depth
- Base, middle and top
- Ample windows at street level
- Human scale
- Well defined entrances
- Street landscaping
- No pitched roofs



### Building Elevations - Not Allowed



- Inappropriate materials
- No changes in surface depth
- Pitched roofs
- Large setbacks from street
- Lack of street landscaping
- Large blank walls
- Not enough glass at street



### Preferred Materials



Brick



Pre-Cast Concrete



Local Limestone



Granite



Other Stone

### Limited Materials



EIFS / Stucco



Sheet Metal



Corrugated Metal



Ground-face Concrete



Textured Concrete

### Prohibited Materials



Vinyl Siding



Unfinished wood



Plywood



Plywood Paneling



Raw Concrete Block